



Railway Track and Signalling

**UGLRL
NSW Country Regional Network**

Section: North

Go to page 2 for index

G F Vincent 2012

Last Revised
29 September 2022

Drawings: 1571

CRN NORTH TRACK & SIGNAL INDEX

Page	Drawing	Section	Page	Drawing	Section
1	Cover	<i>CRN North</i>			
2		Index			
3	<i>Sect. 05</i>	<i>Old Main North (Werris Creek - Armidale)</i>			
4	N568	Werris Creek (ARTC DIN)			
5	N1561	Belgamba - Warral			
6	N1562	West Tamworth - Tamworth			
7	N1563	Nemingah - Kootingal			
8	N1564	Walcha Road - Uralla			
9	N1565	Kelly's Plains - Armidale			
	<i>Sect. 05</i>	<i>Westdale Branch</i>			
10	N1571	Westdale			
11	<i>Sect. 06</i>	<i>Weelelah Branch</i>			
12	N598	Camurra West (ARTC DIN)			
13	N1585	Camurra West - Weelelah			
14	<i>Sect. 07</i>	<i>Burren Junction Branches</i>			
15	N594	Narrabri Triangle (ARTC DIN)			
16	N1591	Narrabri West			
17	N1592	Culgoora - Merah North			
18	N1593	Burren Junction			
19	N1594	Old Burren - Merrywinebone			
20	N1594	Cryon - Walgett Wheat			

LINE	Main North Line
SECTION	Werris Creek - Armidale/Westdale
PAGES	1561 - 1565, 1571

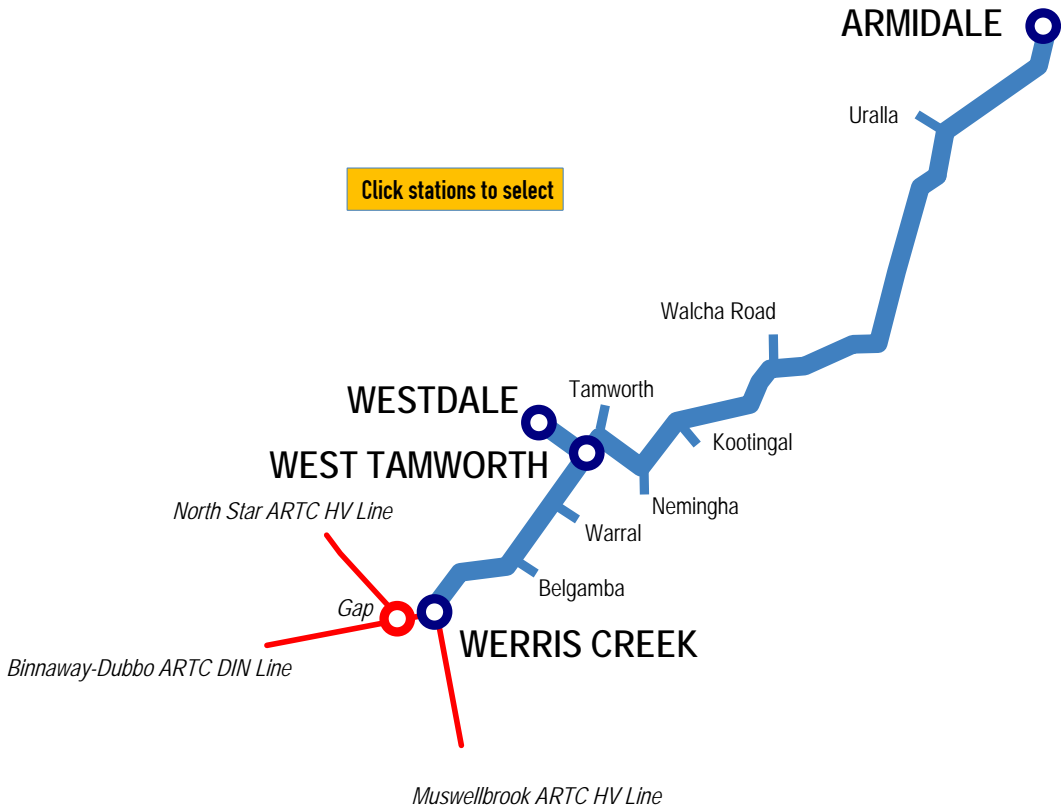
New South Wales *CRN*

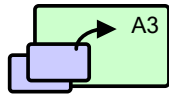


▲ Home

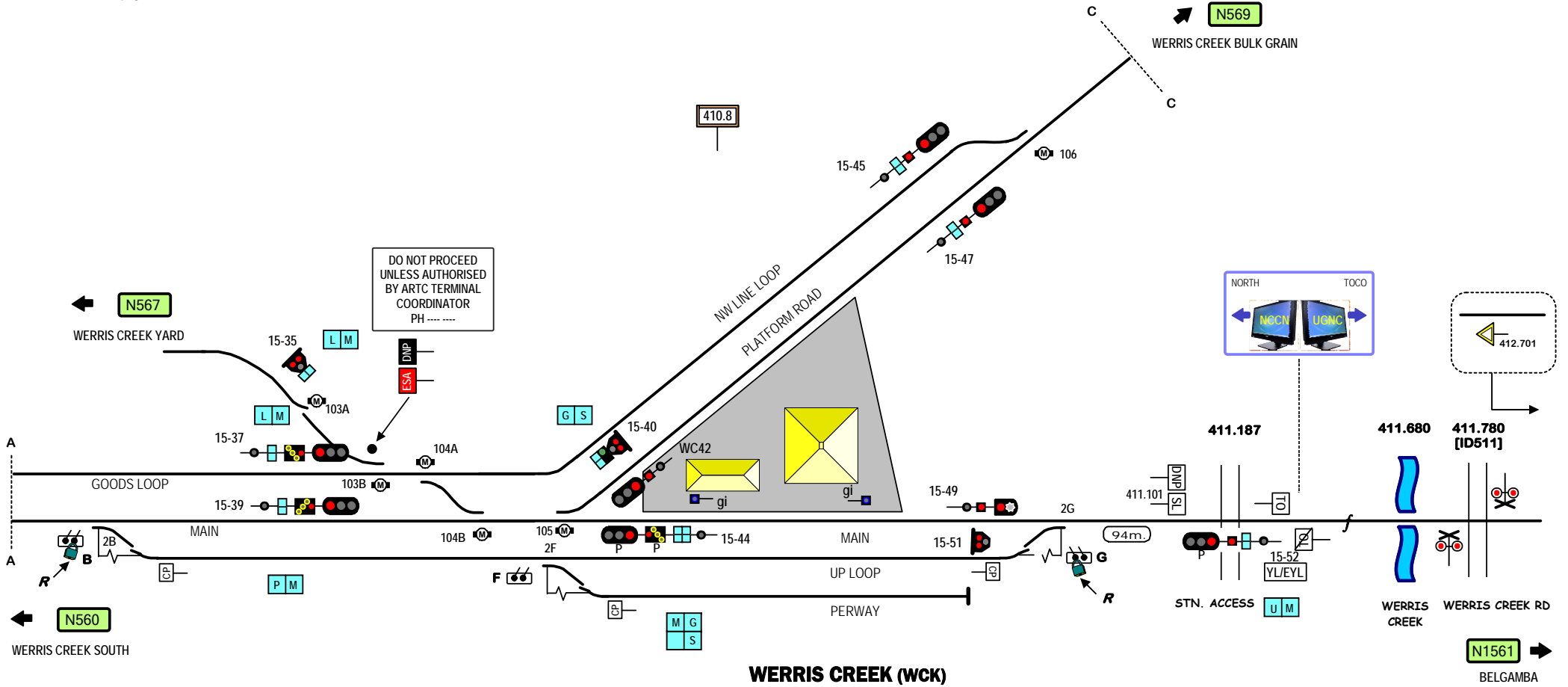


■ Another Line





WERRIS CREEK
on one page



N567

WERRIS CREEK YARD

GOODS LOOP

MAIN

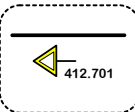
N560

WERRIS CREEK SOUTH

410.8

N569

WERRIS CREEK BULK GRAIN



411.187

411.680

411.780 [I0511]

STN. ACCESS

WERRIS CREEK WERRIS CREEK RD

N1561

BELGAMBA
CRN line to
ARMIDALE

Signal Locations

Home Support

© 2008 G F Vincent

STANDARD GAUGE TRACK
WERRIS CREEK

N568

← N568

WERRIS CREEK

424.347

424.472
[ID149]

426.042
[ID510]

428.050

428.428

429.8

436.675
[ID536]

BELGAMBA

428.015

428.690

430.900

432.005

434.065

ANSTEYS CREEK
CURRABUBULA COMMON RD

WERRIS CREEK RD

CURRABUBULA CREEK

Hardstand
**BELGAMBA
MAIN LINE LOADER**

(DURI)

CURRABUBULA ST

(CURRABUBULA)

WARRAL

438.971

441.986

442.810

2C

443.9

Silos

344m.

WARRAL

441.018
[ID136]

WARRAL RD

445.288

444.862

445.362

TIMUMBURI CREEK

WEST TAMWORTH

447.202

447.371

WARRAL

A
A

N1562 →

WEST TAMWORTH

Signal Locations

Home Support

© 2010 G F Vincent

STANDARD GAUGE TRACK
(CURRABUBULA) - WARRAL

N1561

N1561

WARRAL

WEST TAMWORTH

447.202
447.371

WARRAL

450.400 [ID514]

450.677 [ID509]

451.750

COPE Sensitive Transport

WESTDALE

N1571

TAMWORTH

WEST TAMWORTH (INDUSTRIAL)

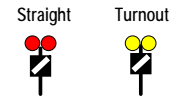
GREEN ST PED. XING

ROBERT ST

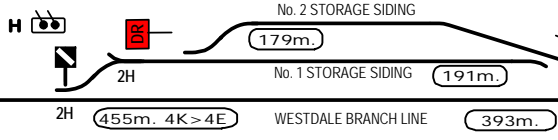
OXLEY HWY OVERPASS

DATUM FOR WESTDALE BRANCH = 452.807

4E CROSSOVER
May be locked in either position



4K
2K
4K
2K

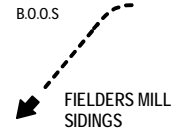
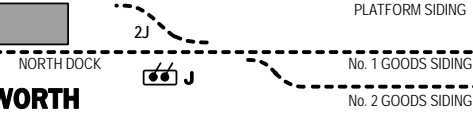


453.272 [ID508]

3 WAY POINTS

WEST TAMWORTH

452.8



DENISON ST

453.527
453.602

454.190
454.380
454.452

454.780 [ID507]

455.234 [ID506]

455.464 [ID513]

455.706 [ID505]

455.927 [ID512]

N1563

KOOTINGAL

Tamworth Viaduct

930m.

EBSWORTH RD

PEEL RIVER

PEEL ST

MARIUS ST

DARLING ST

TAMWORTH

BRISBANE ST

FITZROY ST PED. XING

WHITE ST

HILL ST PED. XING

WEST TAMWORTH

STANDARD GAUGE TRACK

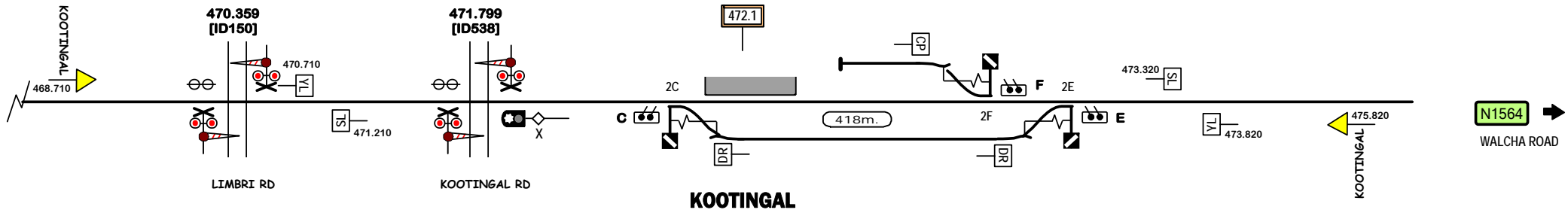
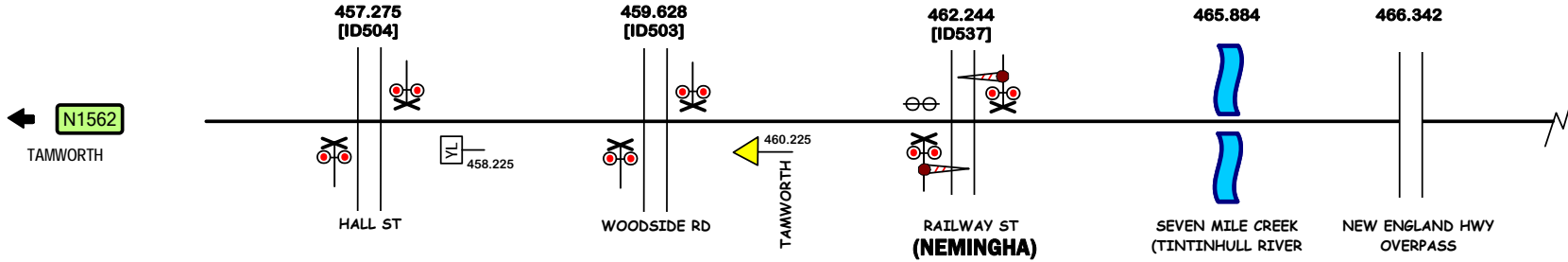
WEST TAMWORTH - TAMWORTH

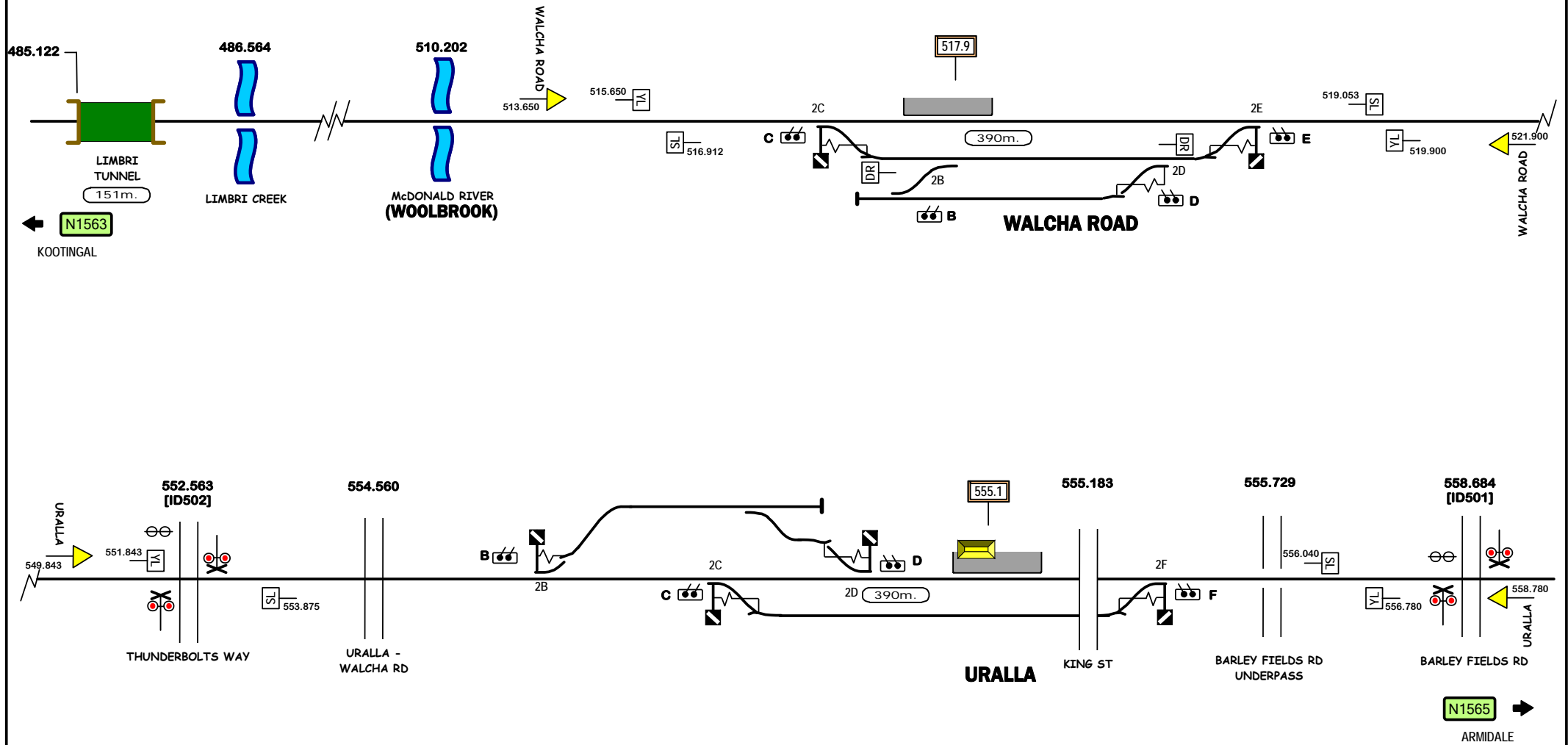
Signal Locations

Home Support

© 2010 G F Vincent

N1562



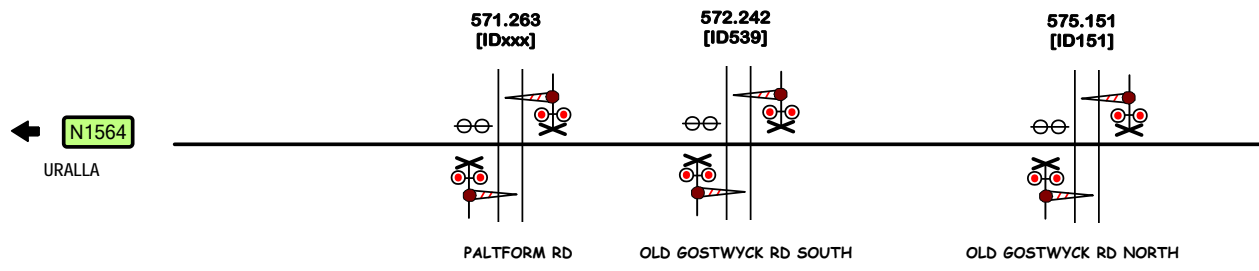


Signal Locations	
Home	Support

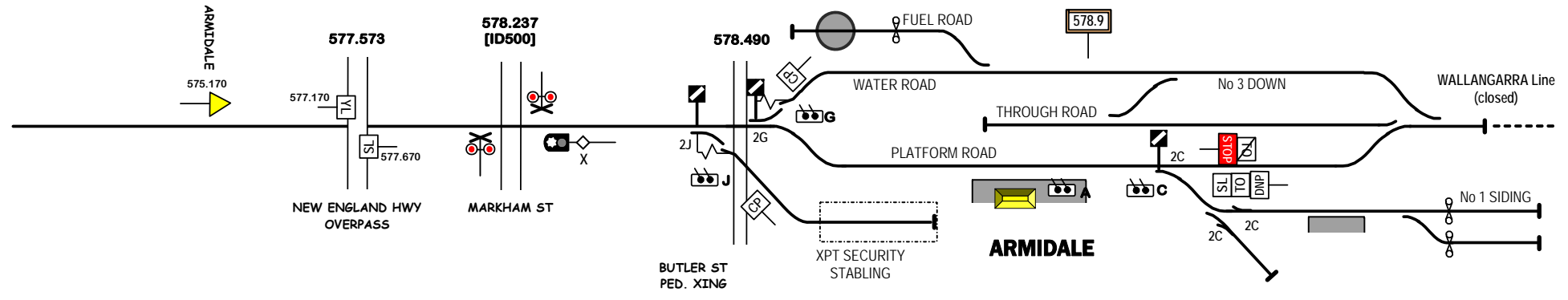
© 2010 G F Vincent

STANDARD GAUGE TRACK
WALCHA ROAD - URALLA

N1564



(KELLY'S PLAINS)



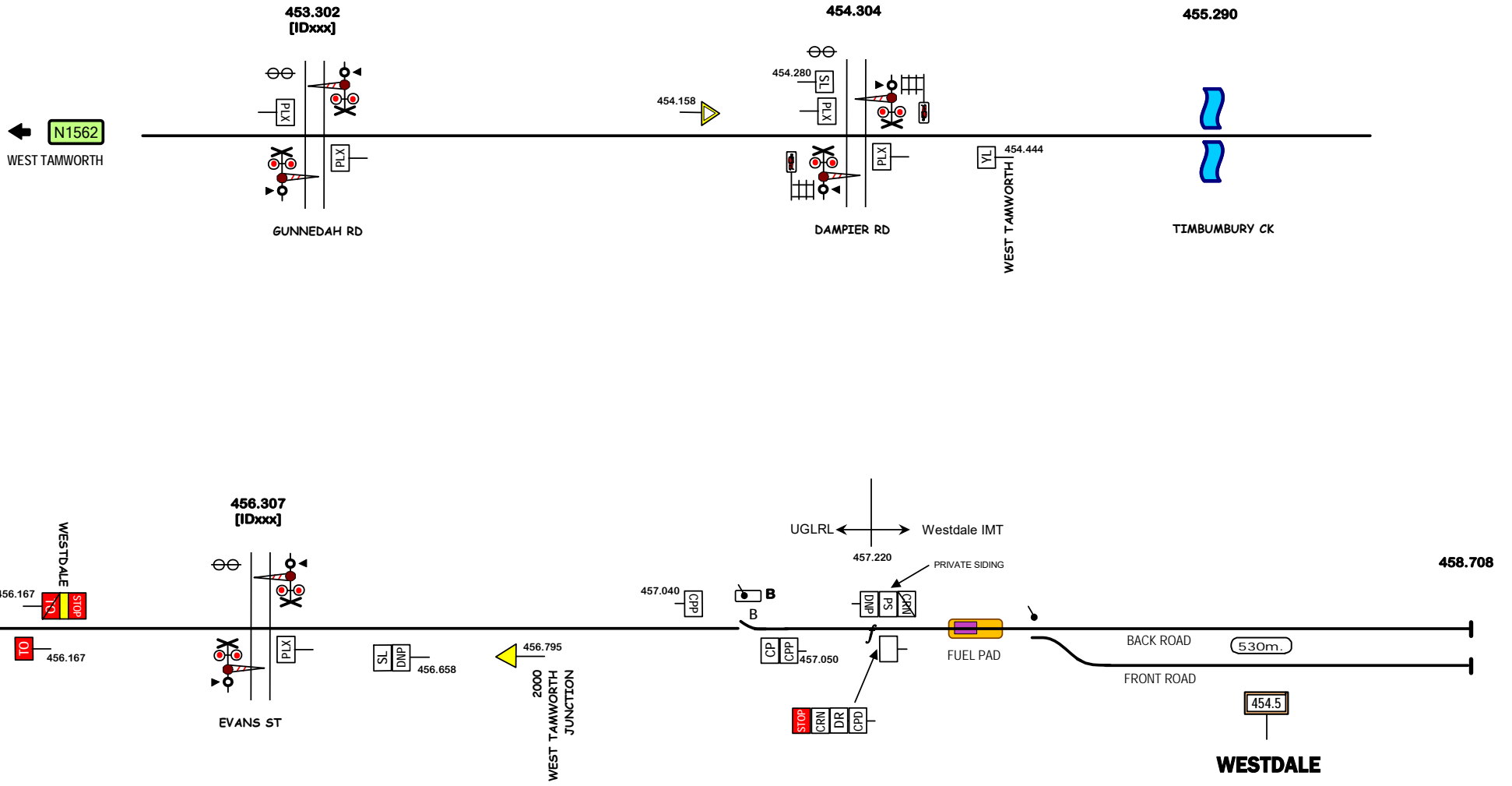
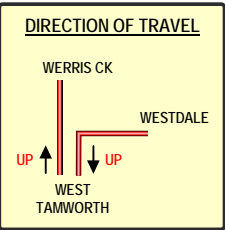
STANDARD GAUGE TRACK
KELLY'S PLAINS - ARMIDALE

Signal Locations

Home Support

© 2020 G F Vincent

N1565



PLX: STOP
DO NOT PASS THIS
POINT UNTIL THE LEVEL
CROSSING IS ACTIVATED

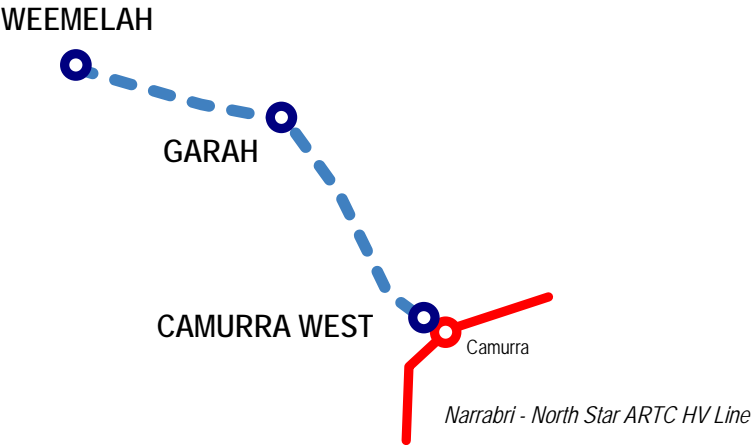
STANDARD GAUGE TRACK
WESTDALE

LINE	Weemelah Branch
SECTION	Camurra West- Weemelah
PAGES	1585

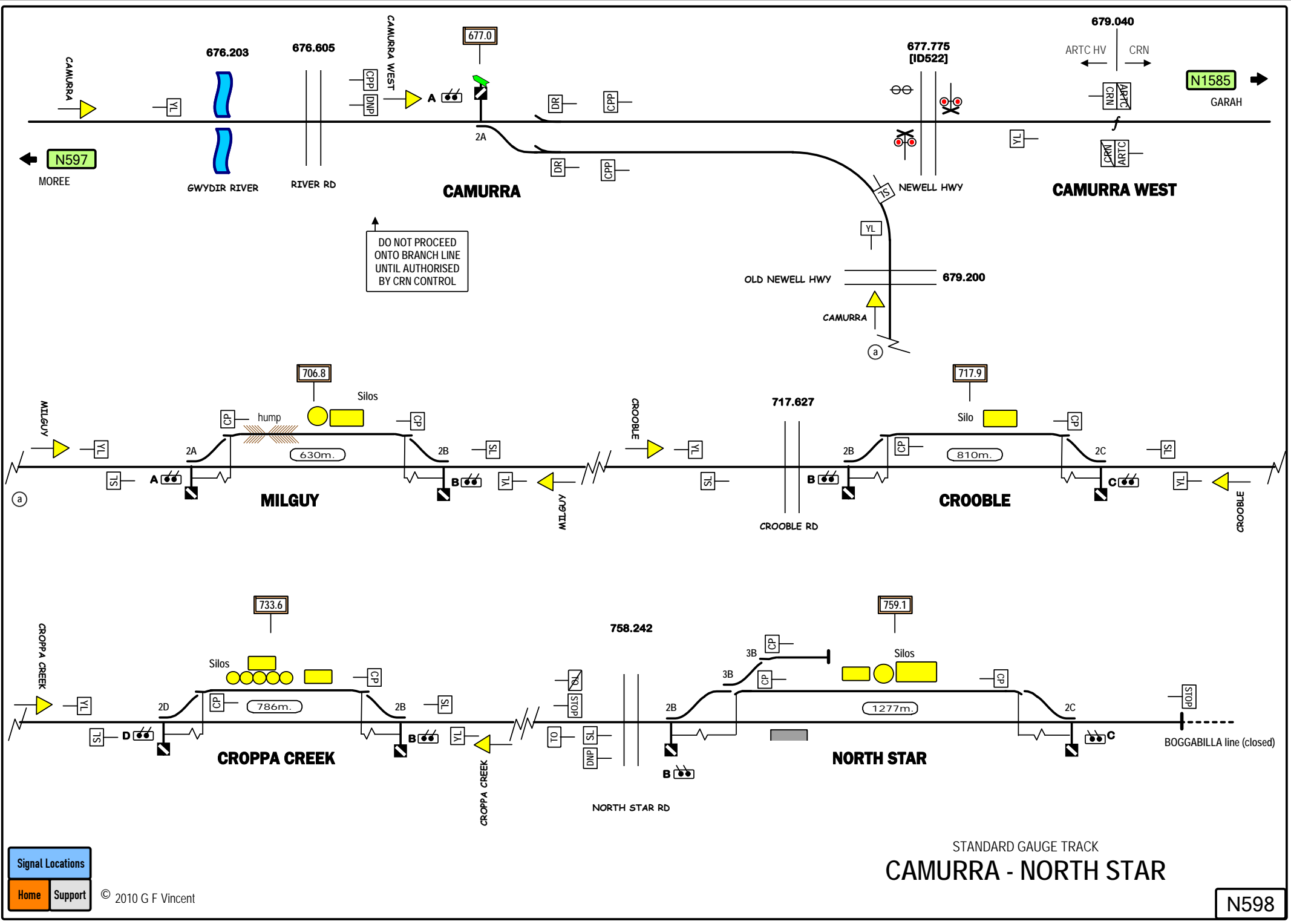
New South Wales *CRN*

▲ Home

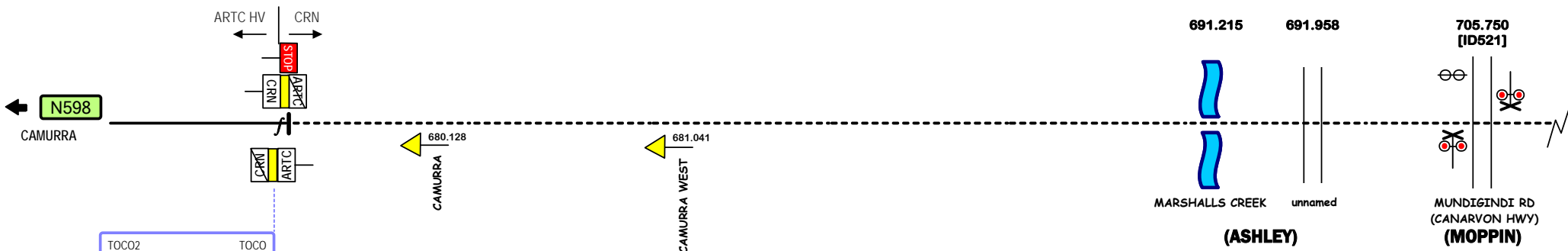
■ Another Line



Click stations to select



679.039
CAMURRA WEST



Signal Locations

Home Support

© 2010 G F Vincent

N1585

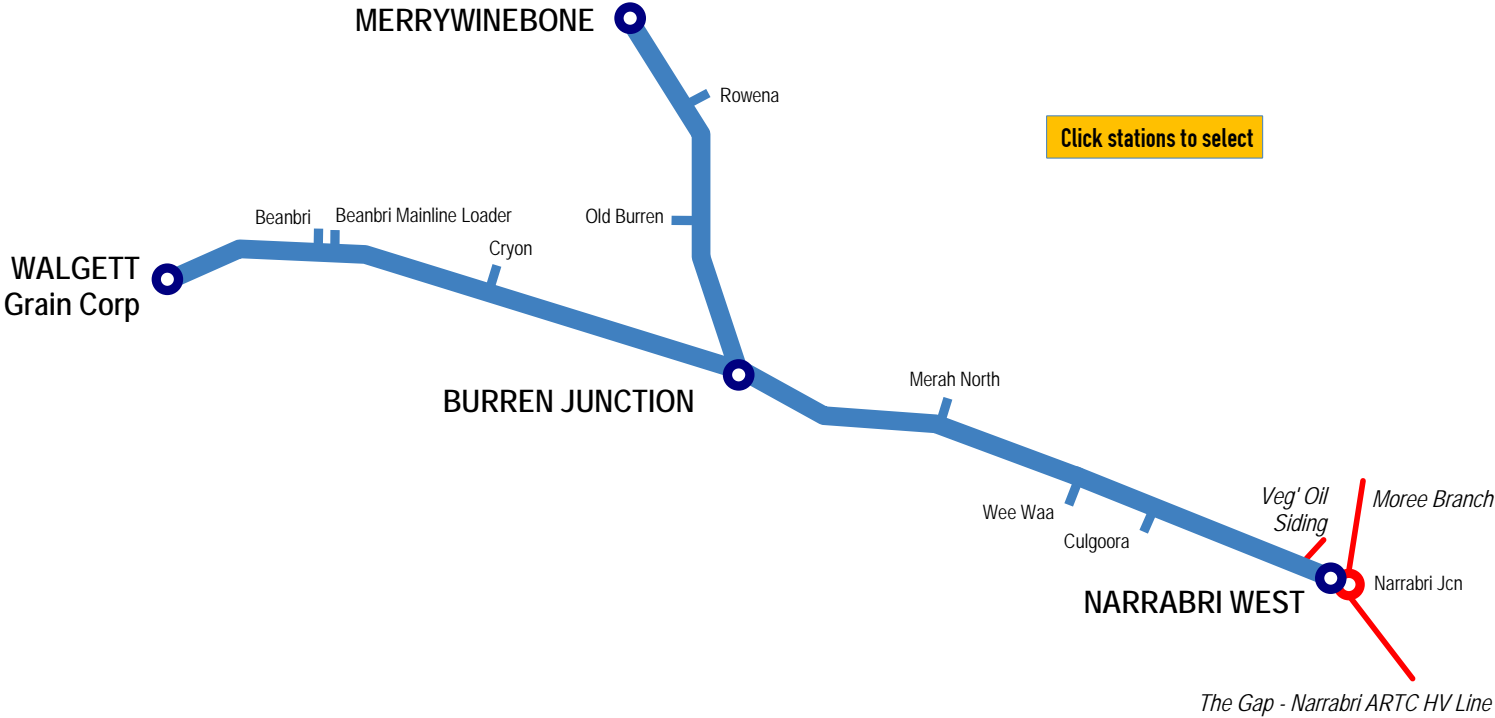
LINE	Burren Junction Lines
SECTION	Narrabri West - Walgett / Merrywinebone
PAGES	1591-1594

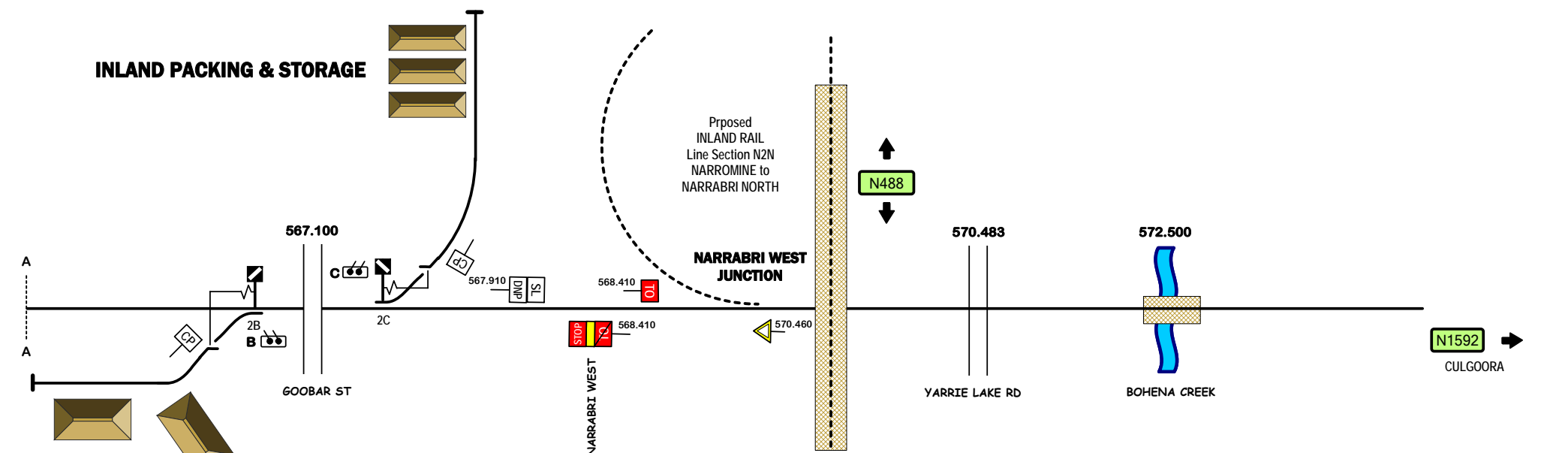
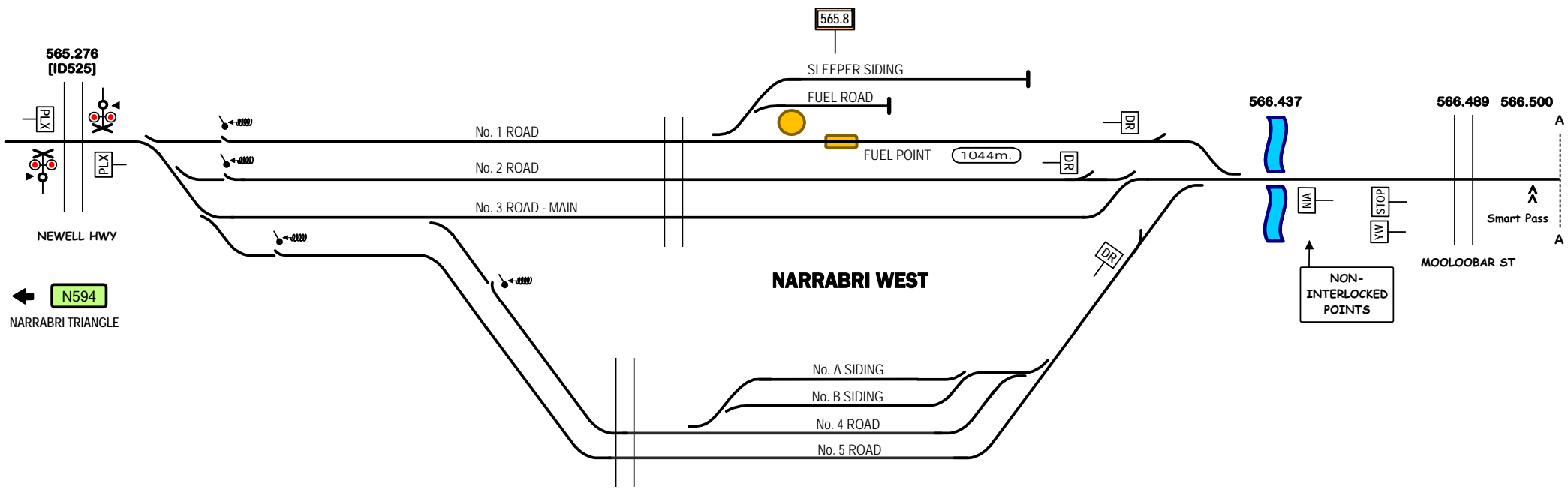
New South Wales *CRN*



▲ Home

■ Another Line





Signal Locations

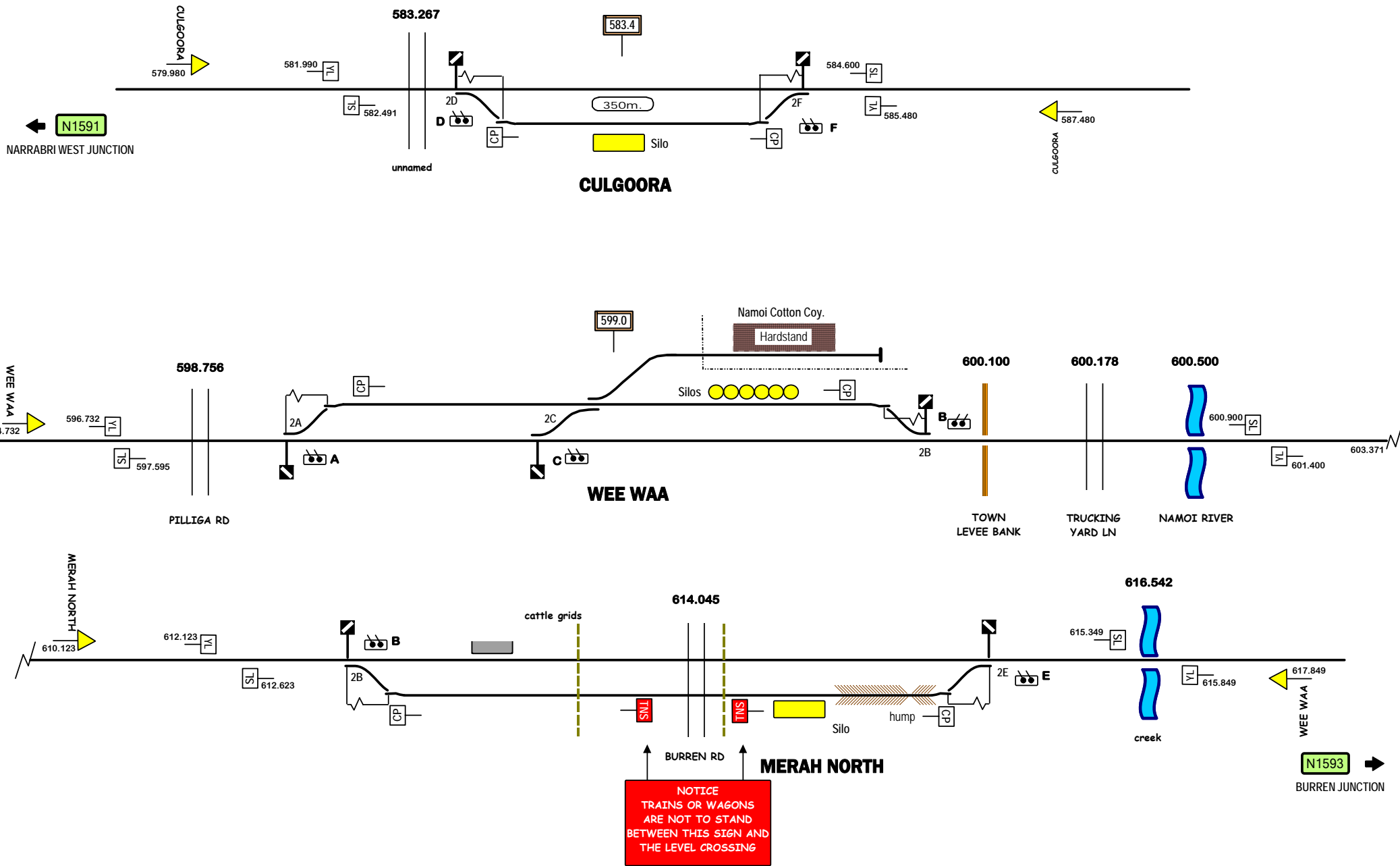
Home Support

NORTH WEST VEGETABLE OIL

© 2010 G F Vincent

STANDARD GAUGE TRACK
NARRABRI WEST

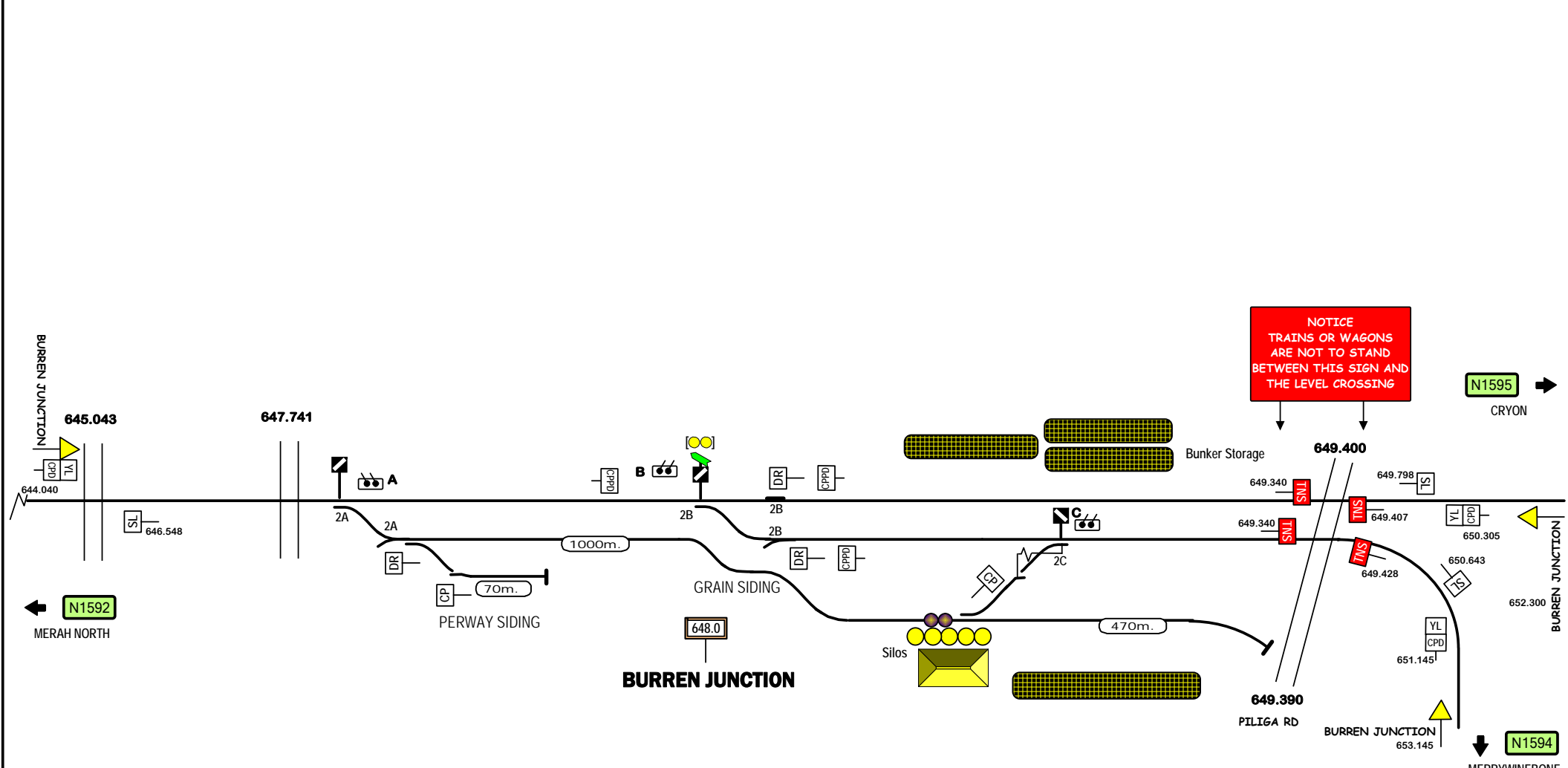
N1591

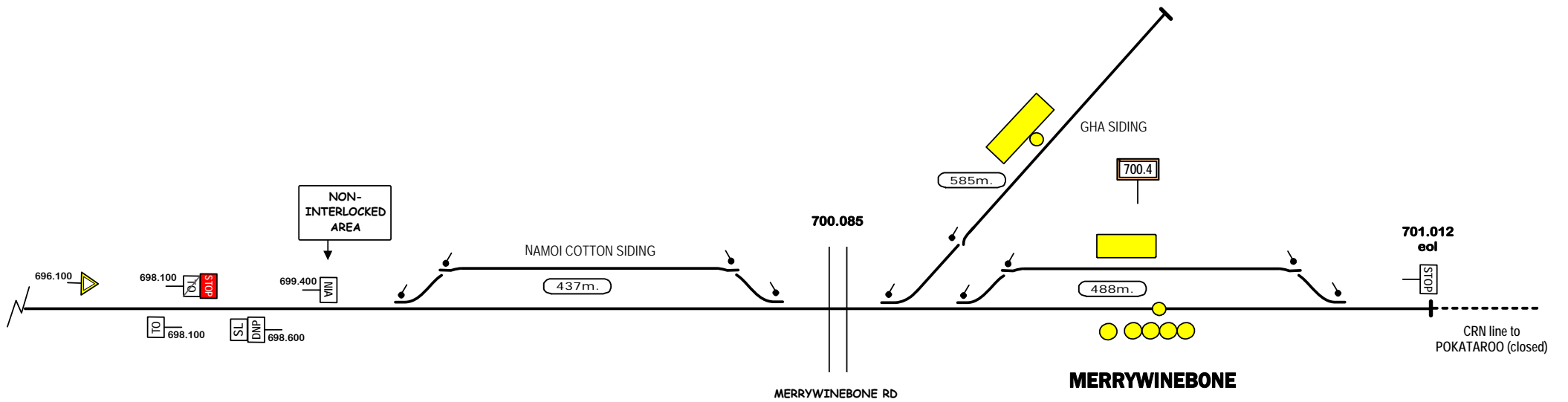
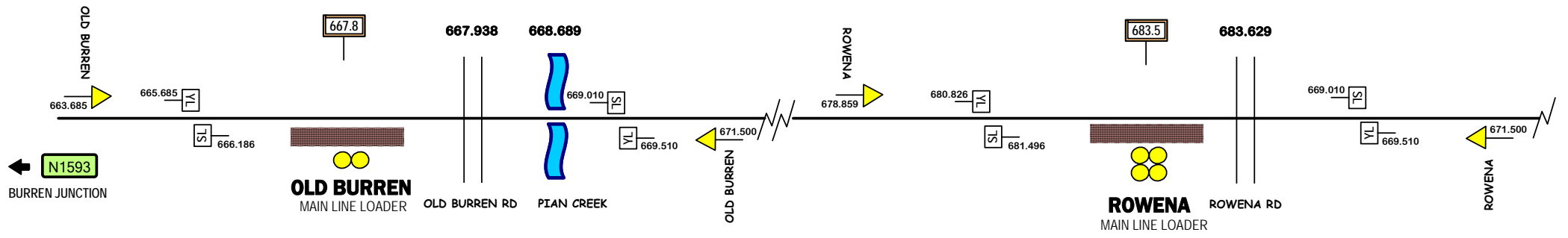


Signal Locations	
Home	Support

© 2010 G F Vincent

STANDARD GAUGE TRACK
CULGOORA - MERAH NORTH





Signal Locations	
Home	Support

© 2010 G F Vincent

STANDARD GAUGE TRACK
OLD BURREN - MERRYWINEBONE

N1594

