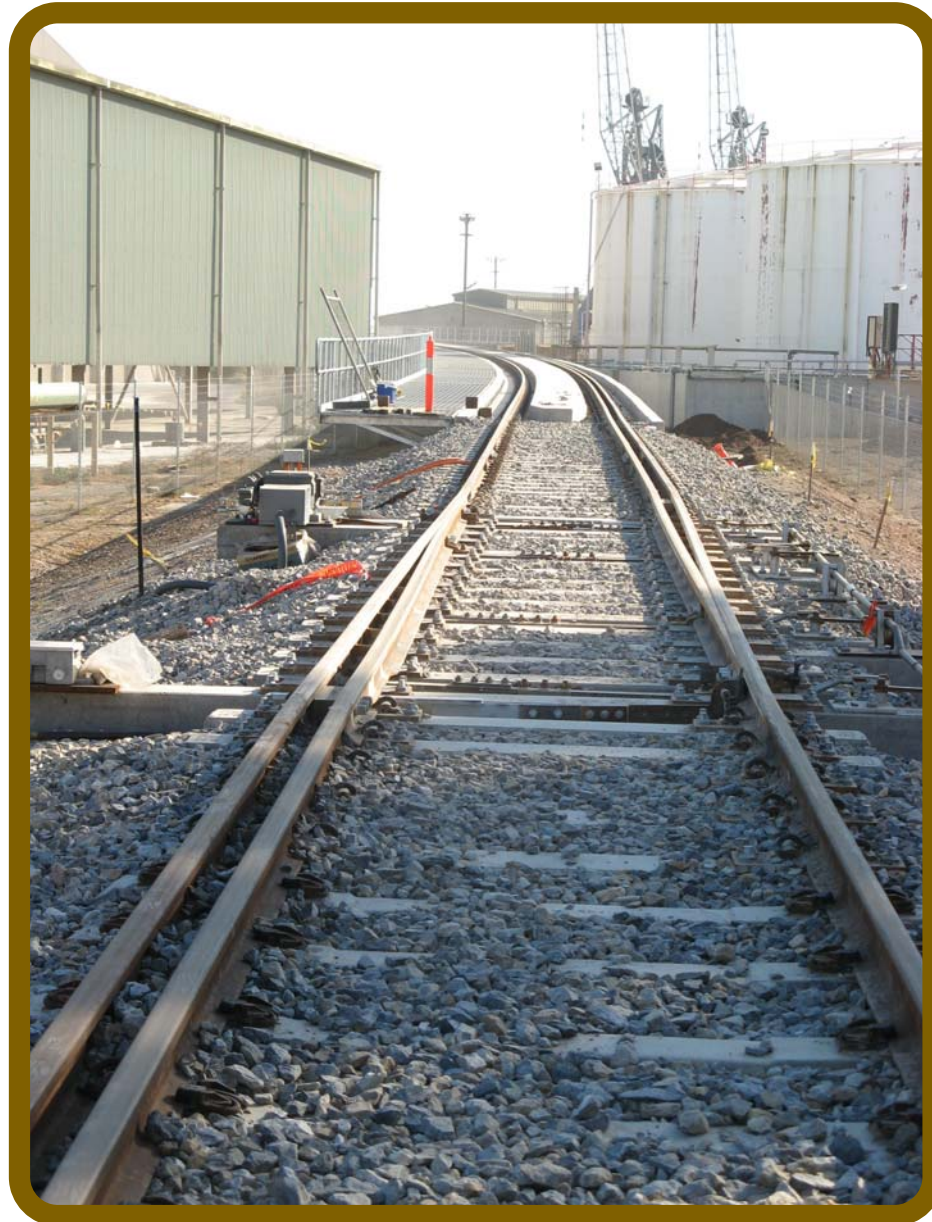




# SOUTH AUSTRALIA'S *MIXED GAUGE MUDDLE*



3rd rail transition with moving blades - Pt Adelaide Flat  
Moving blades installed to permit line speed transit  
through the transition (but prevented mixed gauge trains)

## SECTION - D MULTI GAUGE LINES in ADELAIDE METROPOLITAN AREAS



For other Metropolitan locations refer to  
Section C - Multi Gauge Stations in Metropolitan Adelaide

Metropolitan lines	Era	Drawing	Text
Dry Creek - Pelican Point (via Glanville)	1982 - 2008		
Dry Creek Junction	1982 - 2001		
Gillman Junction	1982 - 2008		
Port Adelaide Junction	1982 - 2008		
Glanville	1982 - 2008		
Birkenhead	1982 - 2008		
Osborne	1982 - 2008		
Pelican Point	1982 - 2008		
Dry Creek - Pelican Point (via Port River Bridge)	2008 - 2015		
Dry Creek Junction	2001 - 2015		
Bishop	2010 - 2015		
Gillman Junction	2008 - 2015		
Port Adelaide Flat $\Delta$	2008 - 2015		
Birkenhead	2008 - 2015		
Osborne	2008 - 2015		
Pelican Point	2008 - 2015		
Dry Creek - Pooraka/Cavan	1982 - ~2001		
Pooraka/Cavan	1982 - ~2001		